

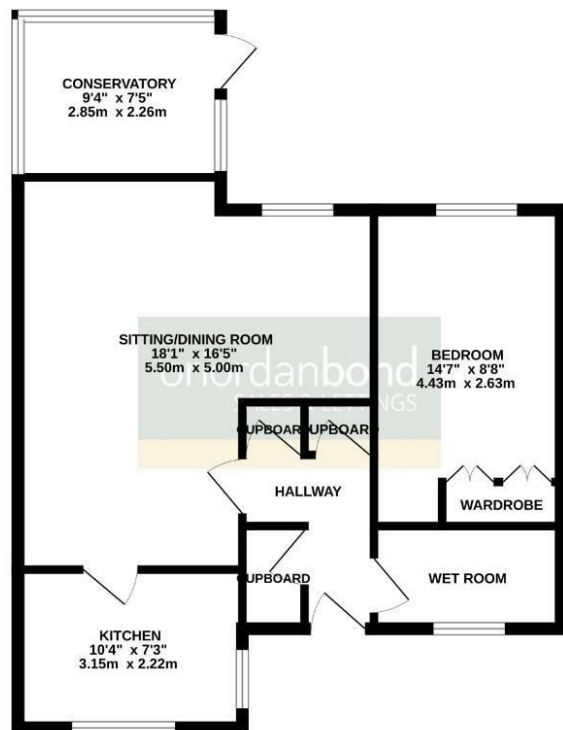


46 Sheraton Close
The Headlands, Northampton

oriordanbond
SALES & LETTINGS



GROUND FLOOR
613 sq.ft. (56.9 sq.m.) approx.



TOTAL FLOOR AREA : 613 sq.ft. (56.9 sq.m.) approx.
Whilst every attempt has been made to ensure the accuracy of the floorplan contained herein, measurements of doors, windows, rooms and any other items are approximate and no responsibility is taken for any error, omission or misstatement. This plan is for illustrative purposes only and should be used as such by any prospective purchaser. The services, systems and appliances shown have not been tested and no guarantee as to their operability or efficiency can be given.
March 2016/04/02/03

46 Sheraton Close

The Headlands

NN3 2NQ

OFFERS OVER

£150,000

Located in the quiet Sheraton Close over 55's development is this one bedroom (formerly two bedrooms) detached bungalow offered to the market with no onward chain. The property is well presented throughout and has a fitted 24hr emergency Appello system.

Accommodation comprises entrance hall with fitted storage cupboards, shower room, double bedroom with fitted wardrobes, separate kitchen with ample wall and base units and open plan sitting/dining area which leads into a conservatory. Outside are low maintenance front and rear gardens. Further benefits include uPVC double glazing, an on-sight development manager (Mon - Fri) and residents lounge area. (B/613/S)

Leasehold Info - Lease Remaining - 90 years (as of 2023) / Service Charges - £2500 per annum

Additional information

- Council Tax Band: B
- Energy Efficiency Rating: D

Viewing

Viewing strictly by appointment – details below

Disclaimer

O'Riordan Bond Estate Agents Limited has not tested apparatus, equipment, fittings or services and so cannot verify they are in working order. The buyer is advised to obtain verification from their solicitor or surveyor.

O'Riordan Bond Abington Sales

01604 639007

abington@oriordanbond.co.uk

